

ALWAYS INSPECT ZMESH FOR FRAYED OR LOOSE EDGES; REPAIR OR REPLACE AS NECESSARY

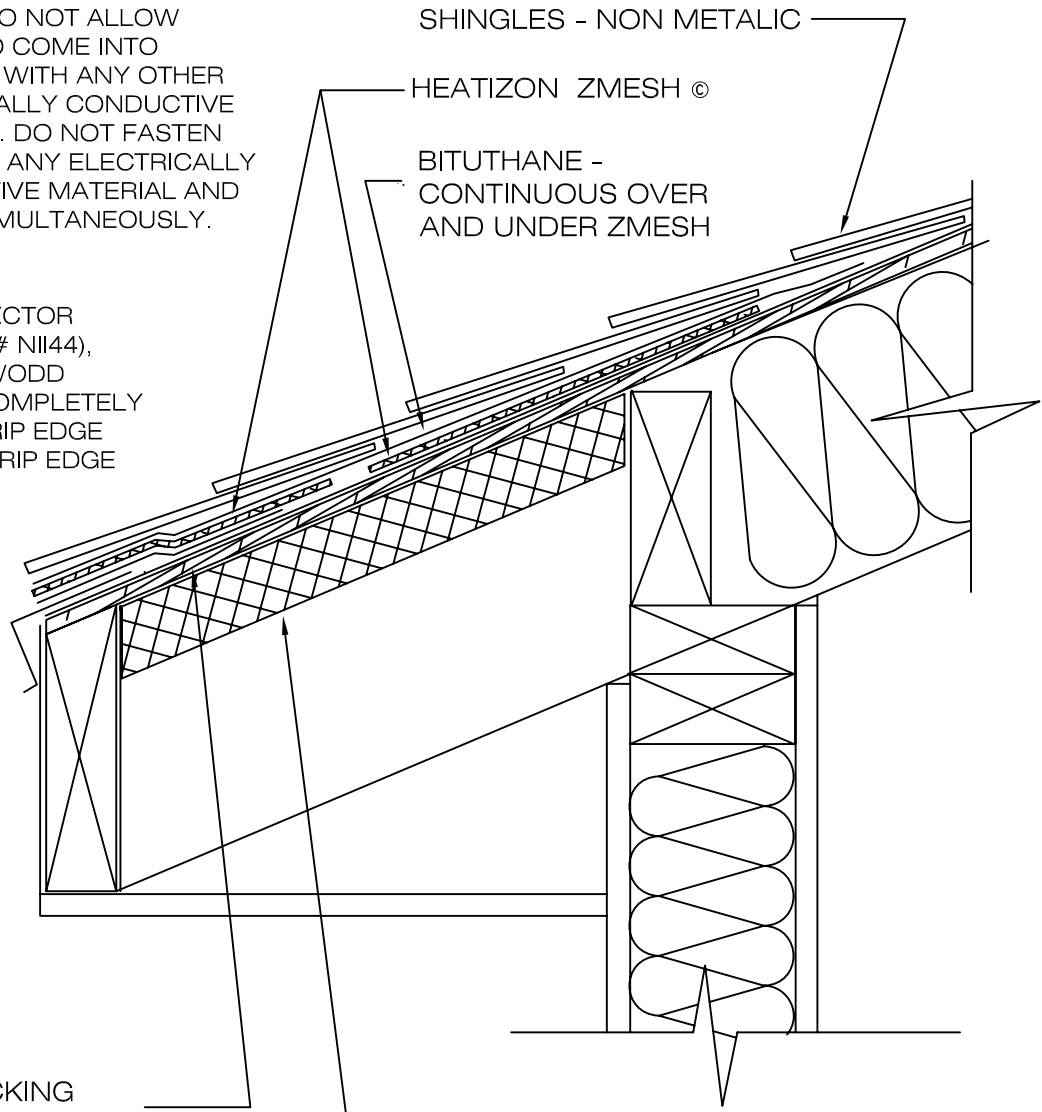
**WARNING!!**  
DO NOT CUT OR DAMAGE ZMESH. DO NOT ALLOW ZMESH TO COME INTO CONTACT WITH ANY OTHER ELECTRICALLY CONDUCTIVE MATERIAL. DO NOT FASTEN THROUGH ANY ELECTRICALLY CONDUCTIVE MATERIAL AND ZMESH SIMULTANEOUSLY.

**NOTE:**  
DRIP EDGE PROTECTOR (HEATIZON PART # N1144), PLEXIGLASS OR WOOD SHEATHING TO COMPLETELY COVER METAL DRIP EDGE AND SEPARATE DRIP EDGE FROM ZMESH

ZMESH MUST BE AS CLOSE TO THE EDGE OF THE DRIP EDGE AS POSSIBLE AND STILL ALLOW THE BITUTHANE TO SEAL (MAX 1/2")

ROOF DECKING  
WOOD OR NON-METALIC

INSULATION - MIN. R-5



DRAWING NO.:

**RD-1**

**EAVE DETAIL - ZMESH  
UNDER ASPHALT SHINGLES**

DRAWING BY:

ACI, RJB

DATE:

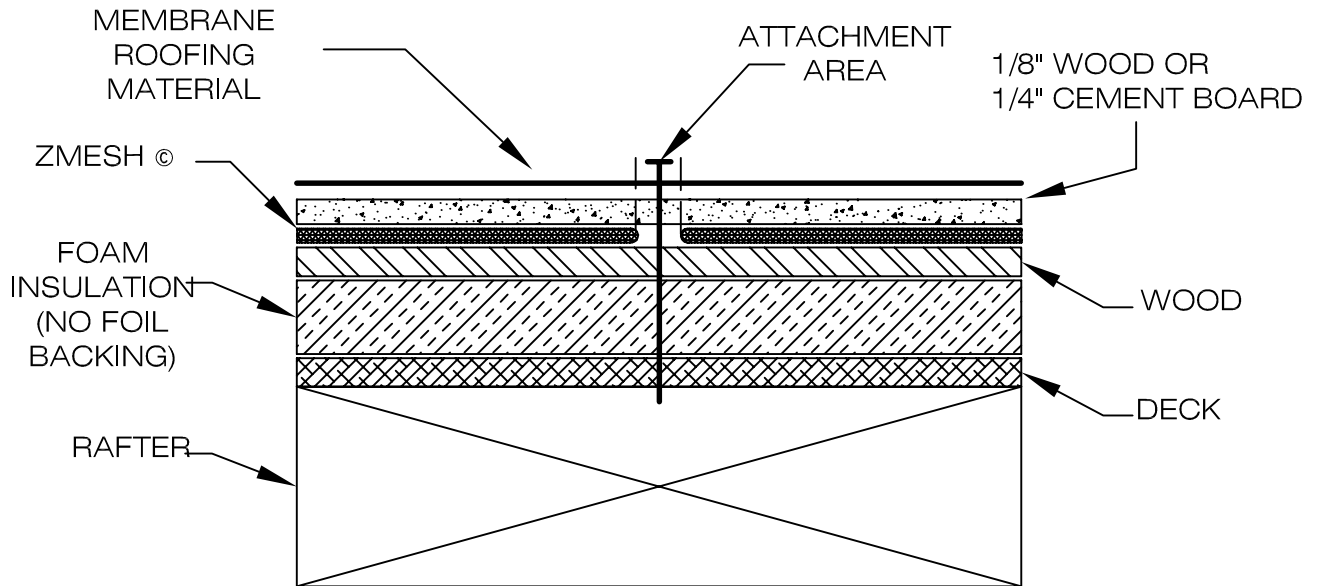
FEB. 2009

**HEATIZON SYSTEMS**  
*advanced floor heating/ snow and ice removal systems*

4137 SOUTH 500 WEST, MURRAY, UTAH 84123 PH (801) 293-1232 FAX (801) 293-3077

**WARNING!!**  
 DO NOT CUT OR DAMAGE ZMESH. DO NOT ALLOW ZMESH TO COME INTO CONTACT WITH ANY OTHER ELECTRICALLY CONDUCTIVE MATERIAL. DO NOT FASTEN THROUGH ANY ELECTRICALLY CONDUCTIVE MATERIAL AND ZMESH SIMULTANEOUSLY.

ALWAYS INSPECT ZMESH FOR FRAYED OR LOOSE EDGES; REPAIR OR REPLACE AS NECESSARY



**NOTE:**  
 ZMESH TO BE INSTALLED WITH 2 INCHES OF SPACE BETWEEN RUNS. CEMENT BOARD TO BE 1/4" THICK. ZMESH SHOULD BE WITHIN 1/2" OF EDGE OF ROOF. DO NOT PENETRATE ZMESH AND EDGE METAL WHEN NAILING OFF. DO NOT ALLOW MECHANICAL FASTENERS TO COME INTO CONTACT WITH ZMESH AND METAL DECK, METAL TRUSSES, OR ANY OTHER METAL.

DRAWING NO.:

**RD-4**

**ZMESH UNDER SINGLE PLY MEMBRANE**

DRAWING BY:

ACI, RJB

DATE:

FEB. 2009

**HEATIZON SYSTEMS**

*advanced floor heating/ snow and ice removal systems*

4137 SOUTH 500 WEST, MURRAY, UTAH 84123 PH (801) 293-1232 FAX (801) 293-3077

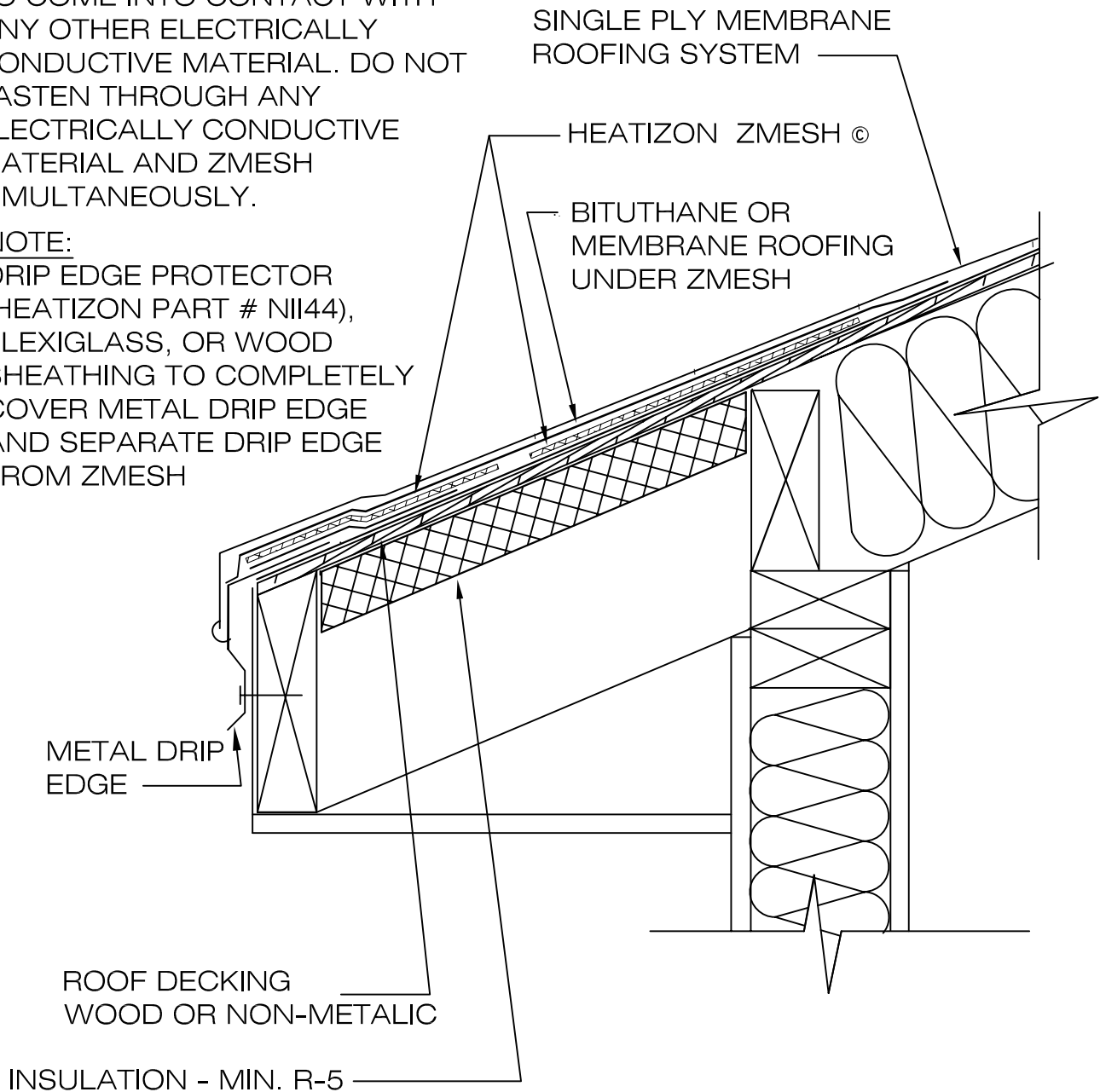
ALWAYS INSPECT ZMESH FOR FRAYED OR LOOSE EDGES; REPAIR OR REPLACE AS NECESSARY

**WARNING!!**

DO NOT CUT OR DAMAGE ZMESH. DO NOT ALLOW ZMESH TO COME INTO CONTACT WITH ANY OTHER ELECTRICALLY CONDUCTIVE MATERIAL. DO NOT FASTEN THROUGH ANY ELECTRICALLY CONDUCTIVE MATERIAL AND ZMESH SIMULTANEOUSLY.

**NOTE:**

DRIP EDGE PROTECTOR (HEATIZON PART # NII44), PLEXIGLASS, OR WOOD SHEATHING TO COMPLETELY COVER METAL DRIP EDGE AND SEPARATE DRIP EDGE FROM ZMESH



DRAWING NO.:

**RD-4E**

**EAVE DETAIL - ZMESH UNDER SINGLE PLY MEMBRANE**

DRAWING BY:

ACI, RJB

DATE:

FEB. 2009

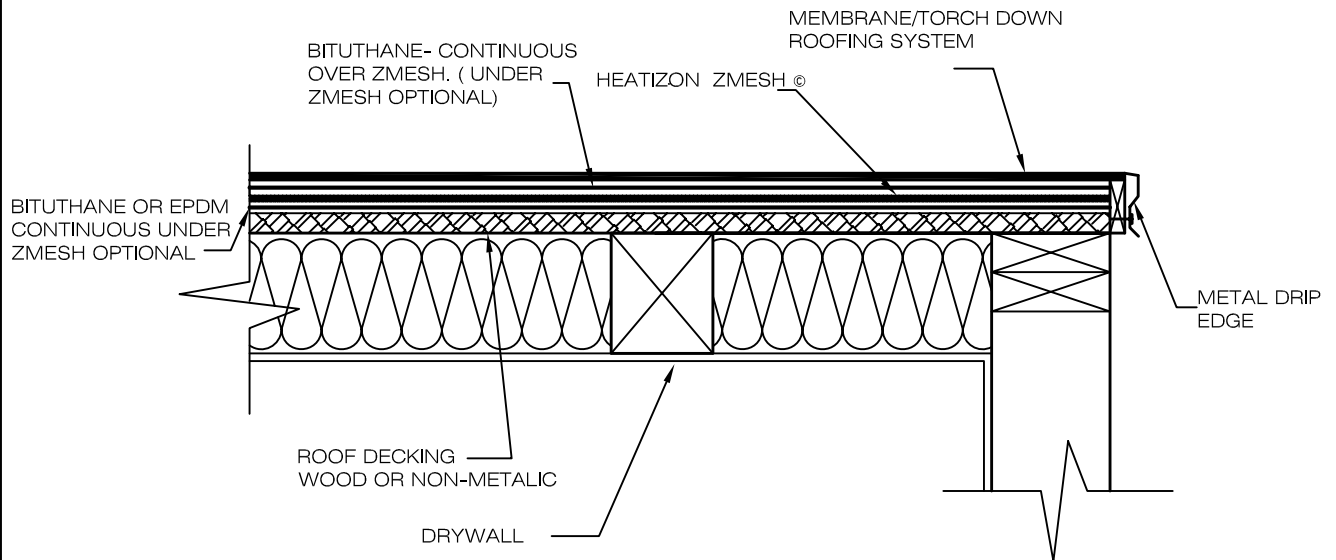
**HEATIZON SYSTEMS**

*advanced floor heating / snow and ice removal systems*

4137 SOUTH 500 WEST, MURRAY, UTAH 84123 PH (801) 293-1232 FAX (801) 293-3077

**WARNING!!**  
 DO NOT CUT OR DAMAGE ZMESH.  
 DO NOT ALLOW ZMESH TO COME  
 INTO CONTACT WITH ANY OTHER  
 ELECTRICALLY CONDUCTIVE  
 MATERIAL. DO NOT FASTEN  
 THROUGH ANY ELECTRICALLY  
 CONDUCTIVE MATERIAL AND  
 ZMESH SIMULTANEOUSLY.

ALWAYS INSPECT ZMESH FOR FRAYED  
 OR LOOSE EDGES; REPAIR OR REPLACE  
 AS NECESSARY



**NOTE:**  
 SINGLE PLY MEMBRANE  
 (EPDM RECOMMENDED)  
 OR 1/8" WOOD SHEATHING  
 TO COMPLETELY COVER  
 METAL DRIP EDGE AND  
 SEPARATE DRIP EDGE  
 FROM ZMESH

DRAWING NO.:

**RD-6**

**EAVE DETAIL - ZMESH UNDER  
 MEMBRANE**

DRAWING BY:

ACI, RJB

DATE:

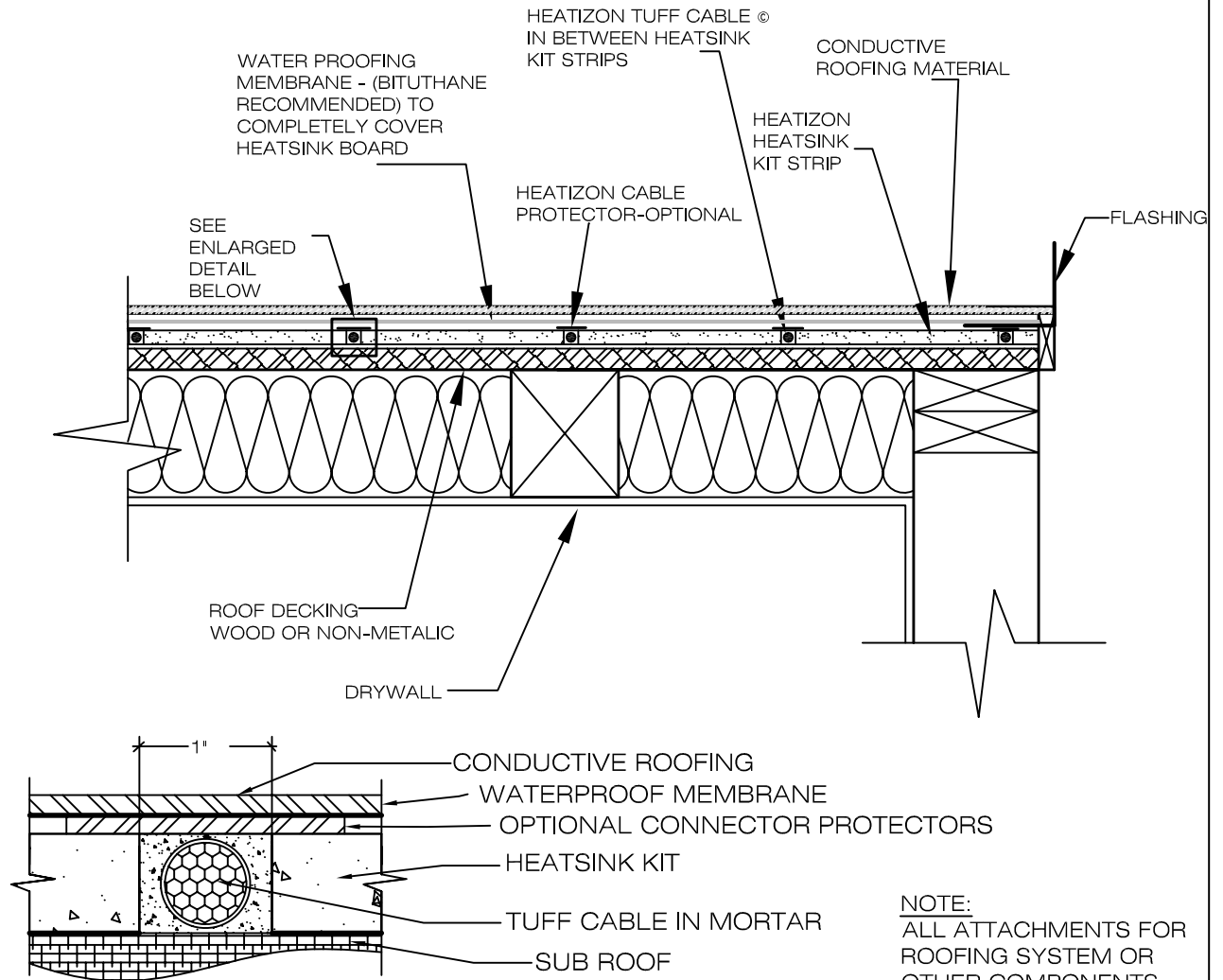
FEB. 2009

**HEATIZON SYSTEMS**

*advanced floor heating/ snow and ice removal systems*

4137 SOUTH 500 WEST, MURRAY, UTAH 84123 PH (801) 293-1232 FAX (801) 293-3077

**WARNING!!**  
 DO NOT CUT OR DAMAGE  
 HEATIZON "TUFF CABLE" OR  
 IT'S INSULATOR IN ANY  
 WAY



**DETAIL**  
 NOT TO SCALE

**NOTE:**  
 ALL ATTACHMENTS FOR  
 ROOFING SYSTEM OR  
 OTHER COMPONENTS  
 SHOULD BE MADE PRIOR  
 TO INSTALLATION OF  
 WATER-PROOFING  
 COVERING

DRAWING NO.:

**RD-3**

**FLAT ROOF - TUFF CABLE UNDER  
 CONDUCTIVE ROOFING MATERIALS**

DRAWING BY:

ACI, RJB

DATE:

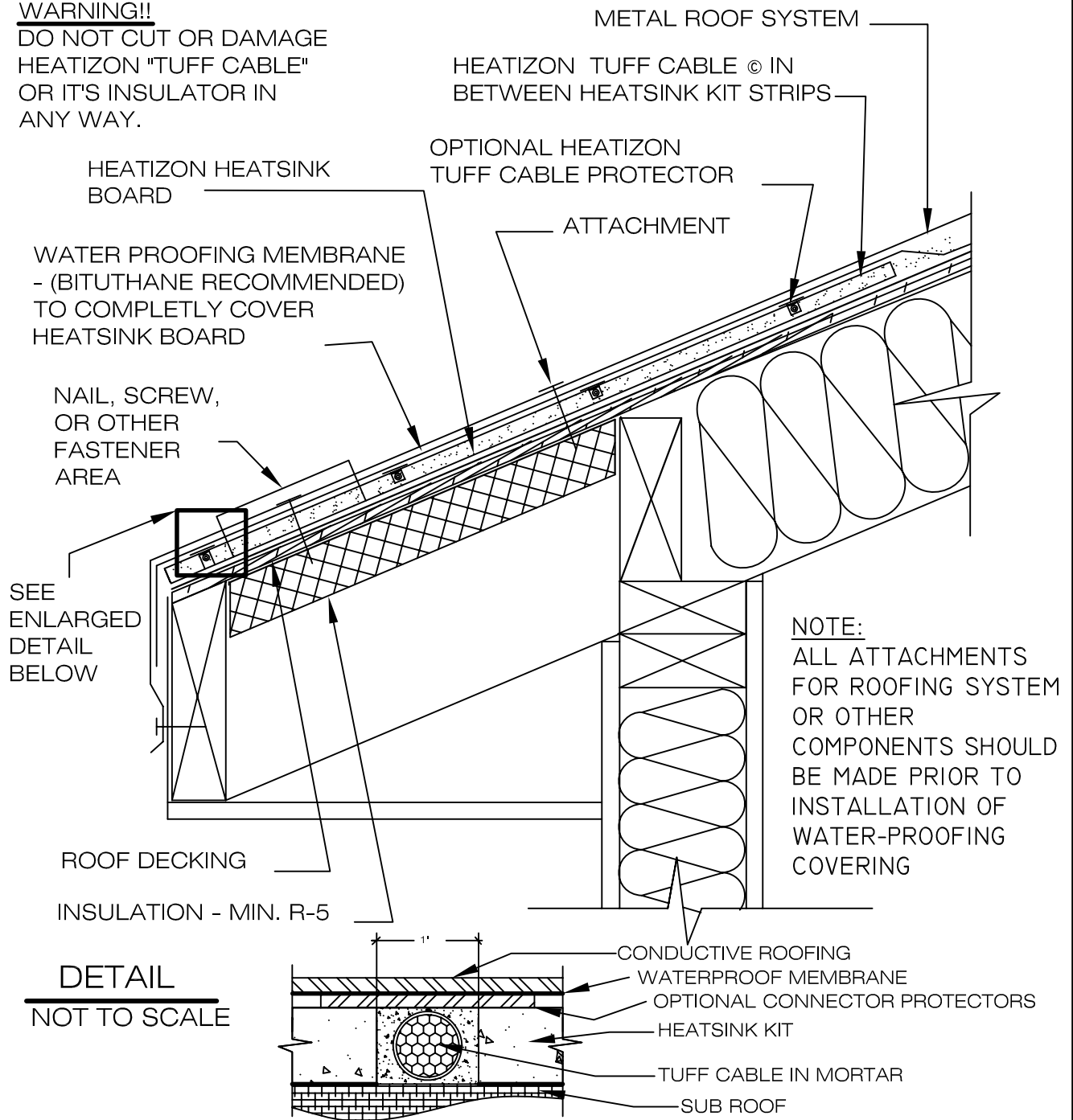
FEB.2009

**HEATIZON SYSTEMS**

*advanced floor heating/ snow and ice removal systems*

4137 SOUTH 500 WEST, MURRAY, UTAH 84123 PH (801) 293-1232 FAX (801) 293-3077

**WARNING!!**  
 DO NOT CUT OR DAMAGE  
 HEATIZON "TUFF CABLE"  
 OR ITS INSULATOR IN  
 ANY WAY.



DRAWING NO.:  
**RD-5**

**EAVE DETAIL - TUFF CABLE UNDER  
 CONDUCTIVE ROOFING MATERIAL**

DRAWING BY:  
 ACL, RJB  
 DATE:  
 FEB. 2009

**HEATIZON SYSTEMS**  
*advanced floor heating/ snow and ice removal systems*

4137 SOUTH 500 WEST, MURRAY, UTAH 84123 PH (801) 293-1232 FAX (801) 293-3077